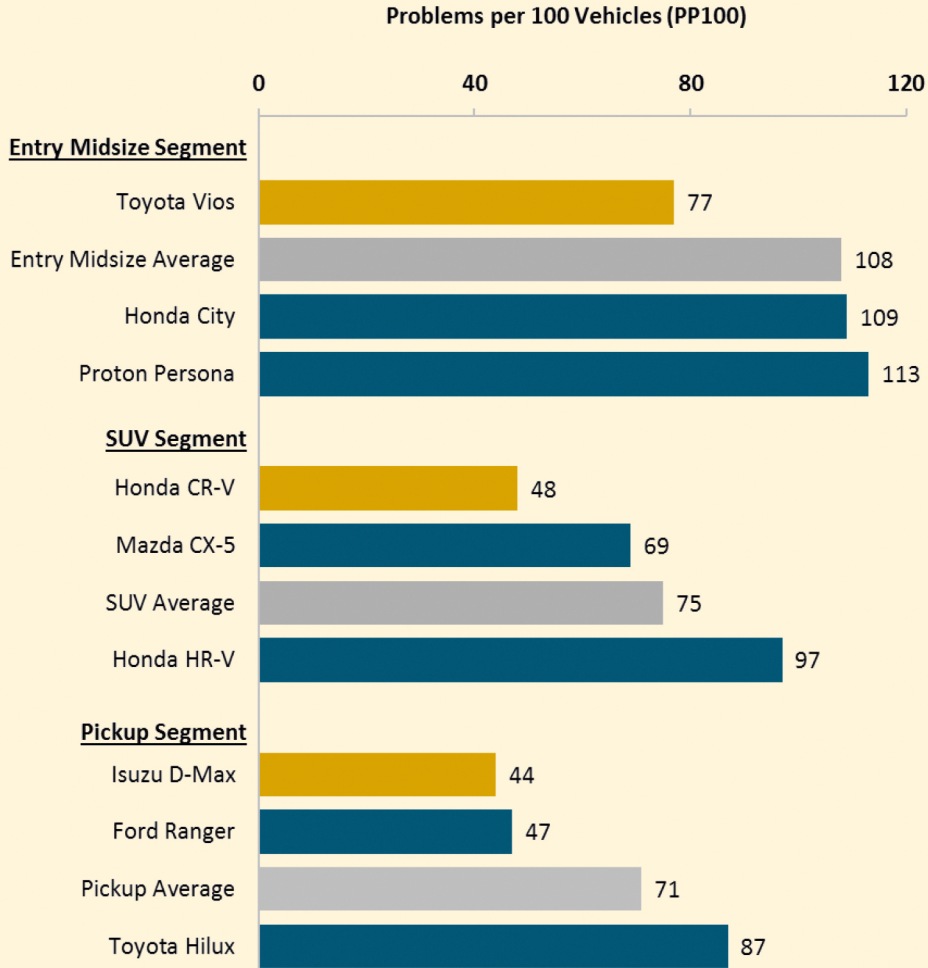


J.D. Power 2018 Malaysia Initial Quality StudySM (IQS)

Top Three Vehicles per Segment in Initial Quality

Lower score reflects better quality performance



Note: Only the top three vehicles per segment are shown. There must be at least three models in any given award segment, and at least one with an IQS score better than segment average for an award to be presented. In the compact, midsize, MPV/ Van, premium compact and premium midsize segments these criteria were not met, thus no awards have been issued.

Source: J.D. Power 2018 Malaysia Initial Quality StudySM (IQS)

Charts and graphs extracted from this press release for use by the media must be accompanied by a statement identifying J.D. Power as the publisher and the study from which it originated as the source. Rankings are based on numerical scores, and not necessarily on statistical significance. No advertising or other promotional use can be made of the information in this release or J.D. Power survey results without the express prior written consent of J.D. Power.